



Let Us Create Futures 2020 Annual Report

Who we are

Let Us Create Futures is a Cambodian non-profit registered under the Ministry of Interior. It is focused on bridging gaps in early childhood development for the marginalized children of the Preah Sihanouk Province. LUCF provides a safe space for learning and development to children below seven years old. It also provides nutrition and other health support, as well as complementary programs for women, youth, and people with disability.



Our Vision

Vision: LUCF envisions empowered women, youth, and children living in health, peace, and prosperity.

Mission: LUCF's mission is bridging gaps in early childhood development while empowering women and youth in Cambodia.

Organizational Values

LUCF is guided by the following organizational values:

We strive for impact. As a specialized organization, LUCF strives to perform and achieve well in all its programs and projects. Professionalism and excellence are expected from LUCF Board of Directors, staff, and volunteers. Ultimately, we want to impact the lives of children and their families and help give them a fighting chance for a better quality of life.

We are accountable to our stakeholders. LUCF takes ownership and responsibility of its programs and projects and their results. LUCF practices integrity and transparency in every aspect of operation, and practices accountability with internal and external stakeholders.

We are an inclusive organization. LUCF does not discriminate among marginalized groups. It will accept anybody as part of its staff and volunteers with no regard for gender, race, or different ability, as long as they are qualified for the position. Inclusivity is also practiced in its programs where the staff ensures that the marginalized in target communities are included in programs relevant them.

We are a learning organization. LUCF learns from its community, partners, donors and the larger social development sector. It nurtures a culture of learning and employs monitoring, evaluation, accountability, and learning to drive the continuous improvement of its programs and operations, to make them more relevant and impactful.

Organizational Governance

Board of Directors

Sopheap Kong - Chairperson

Sophea Thuch - Secretary

Joseph Mahon - Member

Sovann Narak – Member

Alice Lunardelli – Member

Management Team

Sopheap Kong – Acting Executive Director

Donna Mackenzie- Program Support & Fundraiser



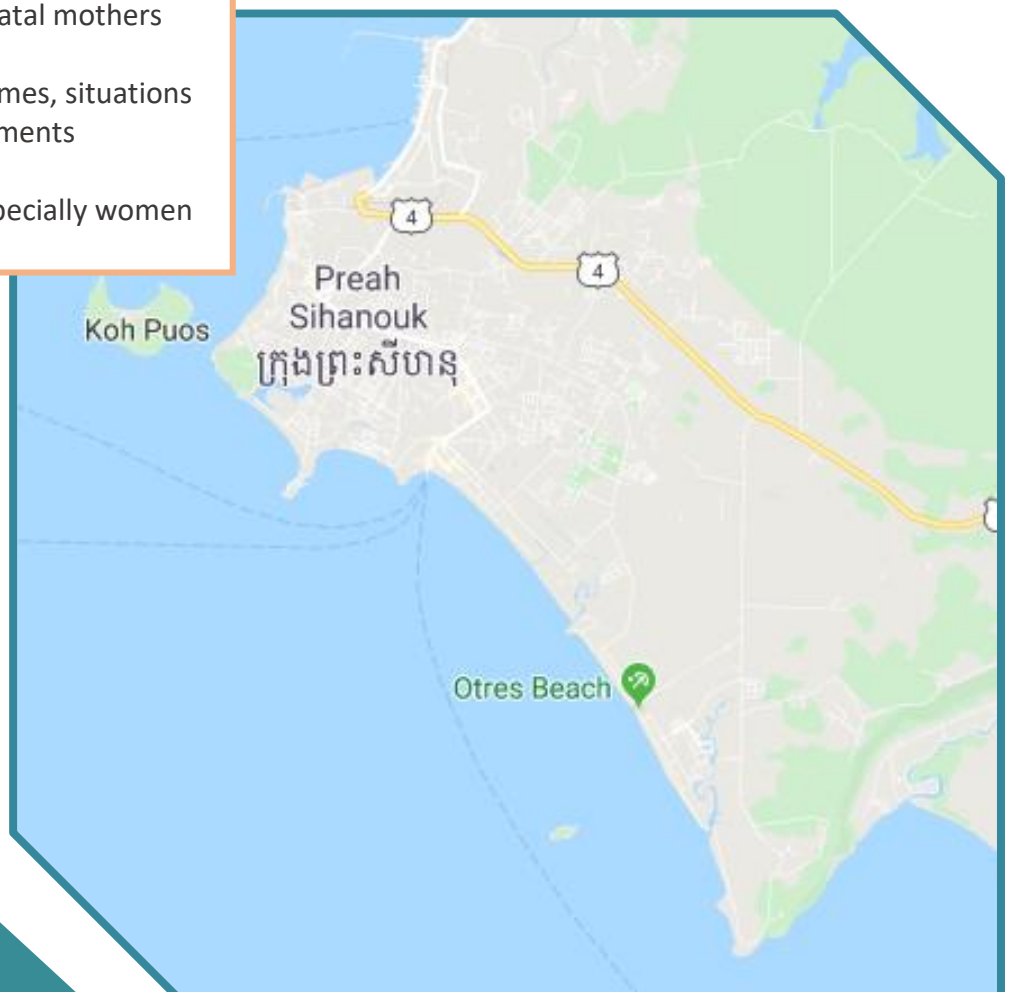
Where we work

LUCF is working in the City of Sihanoukville, offices are located in Sangkat Boun while the major operation is happening in Klang Leu where the Community Center and Preschool is.

We are also supporting two home-based preschools in cooperation with the local commune, in the District of Prey Nup

Target Sectors for 2020

- Children aged 3 to 6 years
- Prenatal and postnatal mothers
- Children in unsafe homes, situations and environments
- Unskilled parents, especially women



Our Programs

2020 was a challenging year across the globe, with unprecedented times that have had devastating effects through many countries, industries and sectors.

Here at LUCF, we have had to adjust how we provide services through the year of 2020, due to both governmental mandated restrictions, and funding challenges

We are proud to be able to report that throughout 2020, we have managed to diversity in response to the COVID-19 situation, and have continuously provided our core programs of Early Years Education & Development, and Nutrition Support



Early Childhood Development

65 Families supported with Early Childhood Development services

55 Students attending LUCF Community preschool & Homebased care facilities

35 Students supported to graduate to government school

Health & Nutrition Support

35 Children received needed medical support

1424 Hot meals served at our community preschool while it was open January to March 2020

1104 Healthy snacks provided to Homebased care facilities between January & March 2020



LUCF Klang Leu Community Centre

The LUCF Centre has been open since July 2019, providing preschool and nutrition support five days a week, for children aged 3 – 6 years old.

As our services expand it will become the hub of LUCF services for the community of Klang Leu, providing women, youth, and community empowerment programs and activities

The Centre has had to close for the majority of 2020, in line with governmental safety requirements. During this time, with thanks to our outreach team, we provided 'home learning kits' for our students, along with monthly nutrition packs that supported our students and their families.

Throughout the mandatory closure, our dedicated team continued work on developing LUCF services and provisions.





LUCF Community garden was better developed and planted with flowers and sustainable vegetables

Improvements to the LUCF Community Centre were made to Strengthen the way we deliver our program & adhere to COVID 19 precautions



COVID- 19 in Cambodia

Cambodia was lucky to report relatively low cases of COVID-19 in 2020, largely avoiding the community health impacts of the pandemic, however Cambodia’s economy suffered significantly

The outbreak caused a sharp decline in tourism, manufacturing exports, and construction. These, Cambodia’s key industries, accounted for almost 40 percent of employment in 2019

The COVID-19 pandemic intensified the situation of an already economically challenged Sihanoukville, which had undergone extreme changes in the previous year

Throughout 2019 the city experienced a boom in construction due to Chinese investment in the Casino and hospitality industries. This came to a sudden halt after an announcement from the government to ban online gambling, which led to the closure of many businesses with a vast numbers of Chinese abandoning construction projects and fleeing the country. The effects of this, left large amounts of the community with no employment or income, and many in debt

To cope with the income losses, households have had to reduce consumption of all kinds, particularly impacting food and nutrition, with the most severely affected being community already living in poverty

The closure of educational facilities has had a serious impact on children’s education and development, disrupting learning, and the provision of daily healthy meals

The lack of these provisions also put extra strain of families where childcare support is needed for parents to work. The most vulnerable families already living in poverty have suffered restrictions on being able generate potential income, and have been impacted with loss of livelihoods



LUCF COVID- 19 Response activities

Minimizing the threat of COVID-19 and providing our community members with protection, information and continued access to education was priority with our COVID-19 response efforts

We identified the need to support children and their parents during this period of severe economic hardships with access food, providing a nutritionally rich diet

Supported by local and international fundraising LUCF was able to provide:

- Information on diseases and how they are spread
- Protection items including face masks, hand sanitizers and soap
- Home study packs for students
- Monthly nutrition support



125 Community members supported with COVID protection materials

495 Home study packs provided to students

585 Monthly Nutrition packages delivered between March & December 2020

Partnerships

We signed Memorandums of Understanding with the following partners:

- Provincial Department of Education

We work with the department to increase standardized early childhood education within the province

- M'lop T'pang

M'lop T'pang generously provides medical support to the children currently enrolled in community day care and preschool

SafetiPin Project

LUCF conducted the data gathering for the SafetiPin Project in Partnership with both Safetipin and The Asia Foundation in Cambodia.

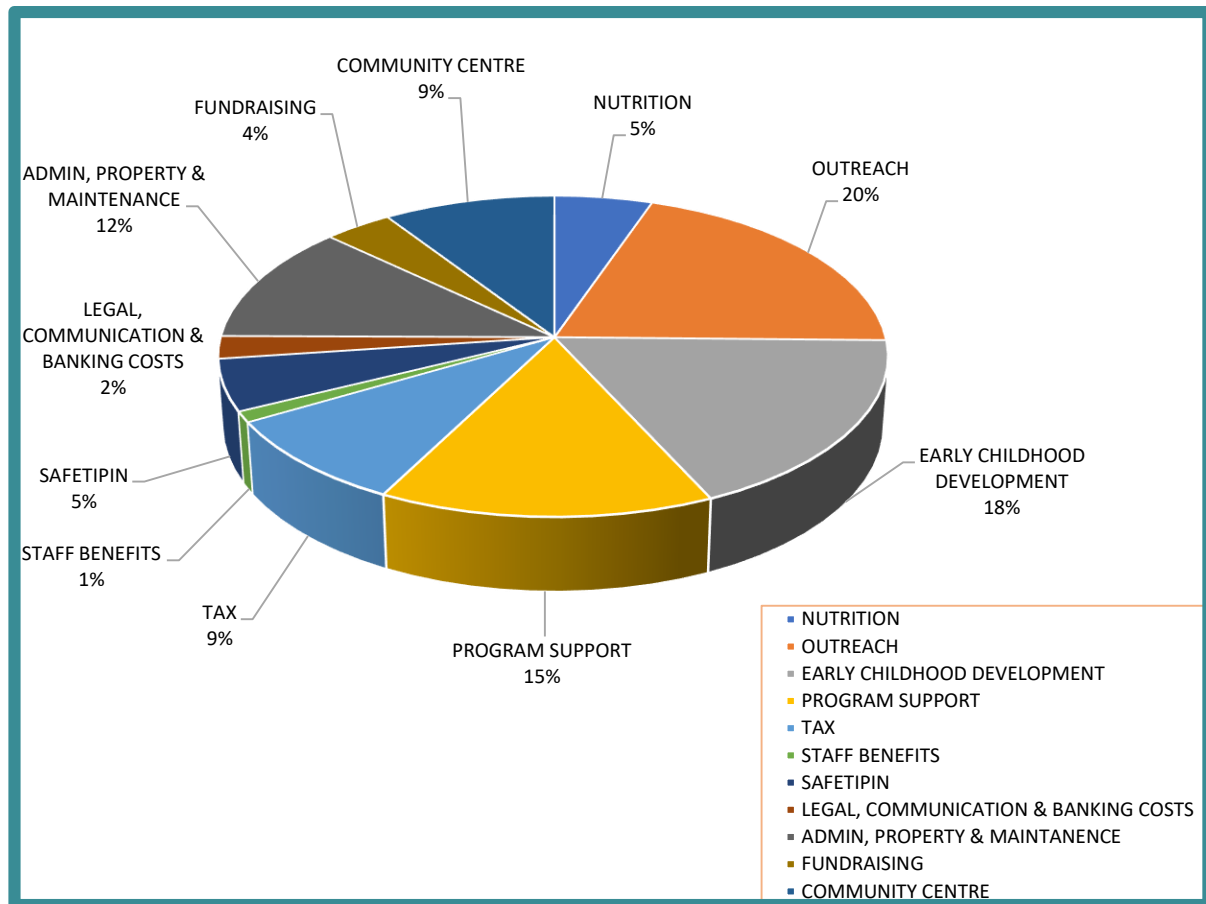
Sihanoukville was the pilot city where 600 audit points were gathered on the condition of selected areas in the city. This opportunity was a safety-focused project in line with LUCF's Health and Safety (HAS) Progra



2020 Financials

In 2019 LUCF Operating Expenses were **\$68309.05**

How we used these funds:



- 20% Outreach
- 18% Early Childhood Development
- 15% Program Support
- 12% Admin, Property & Maintenance
- 9% Community Centre
- 9% TAX
- 5% Safetipin Project
- 5% Nutrition Support
- 4% Fundraising
- 2% Legal, Communication & Banking
- 1% Staff Benefits

For more information contact us

info@letuscreatefutures.org
www.letuscreatefutures.org

Follow us

